

LAAL-201-01-Hartford Research Project
**Environmental Justice Project with
Center for Leadership and Justice CT**



Trinity College & CT State Community College Capital
Tuesdays: 1:30-4:10 pm
Spring 2025



**CENTER for
LEADERSHIP
& JUSTICE**

Welcome and Project Goals (Sarah McCoy)

- **Who:** Collaborative research project with these partners:
 - Center for Leadership and Justice/Greater Hartford Interfaith Action Alliance (CLJ/GHIAA)
 - Trinity College
 - Stowe Center for Literary Activism
- **What:** Documenting the experiences and views of Greater Hartford residents on environmental justice issues.
- **Why:** Promote regional understanding and consensus for action to address environmental injustice.

Plan for Today

- Students from Trinity and CT State community colleges are launching this project through the **Liberal Arts Action Lab**.
- Focus is regional trash management and the ways it impacts Hartford residents.
 - CLJ will use findings to inform the remediation process for the shuttered MIRA trash incinerator in the South End of Hartford.
- Today:
 - What is PhotoVoice?
 - Training on how to participate
 - Including example PhotoVoice “lite”
 - Wrap up with discussion and dinner

Introductions



NAME



PROJECT ROLE
(E.G. STUDENT,
INSTRUCTOR, PARTICIPANT)

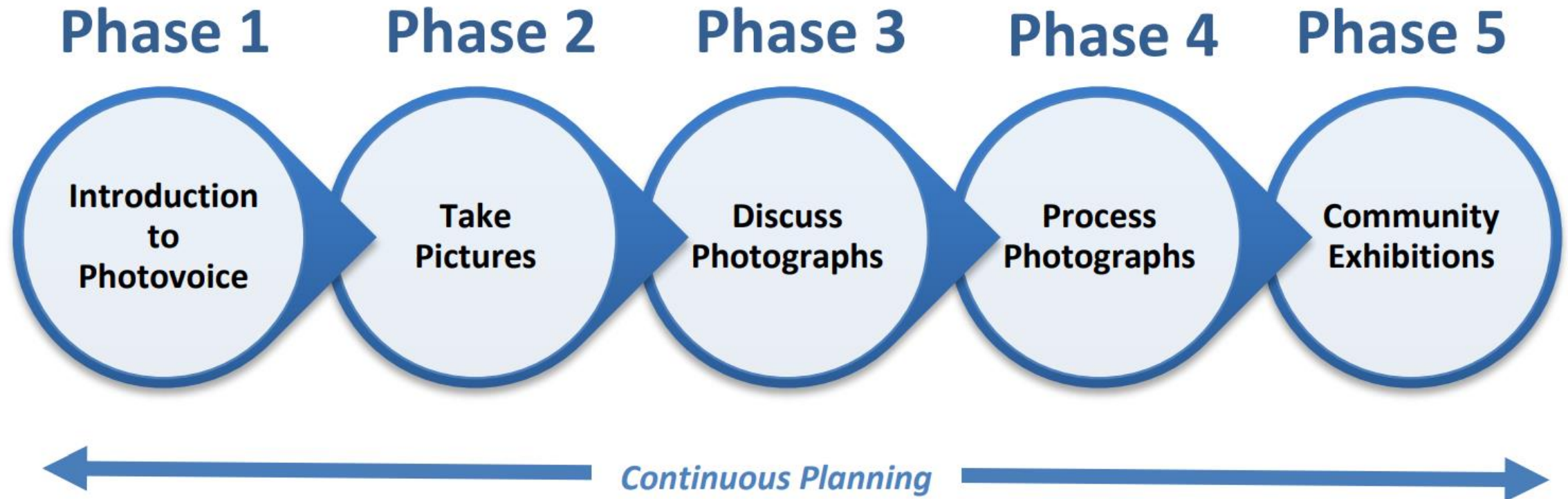


TOWN OF
RESIDENCE

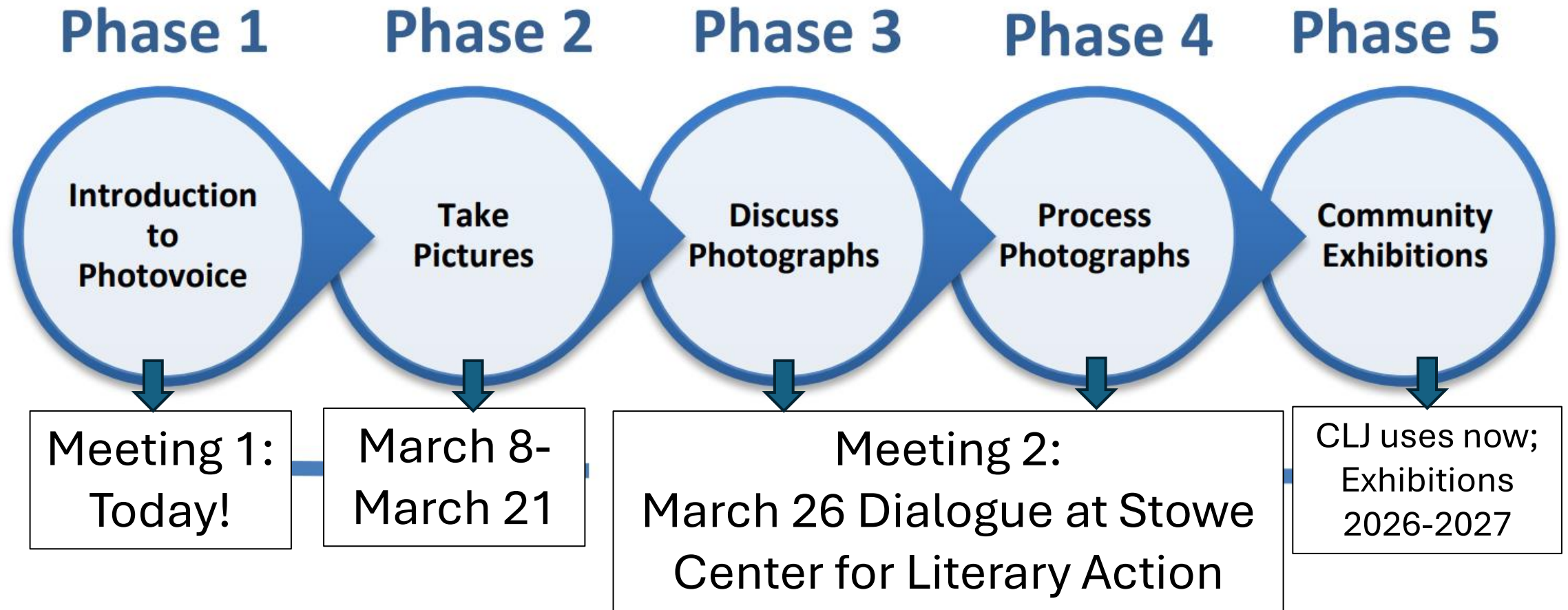
What is PhotoVoice? (Jackson)

- Form of participatory action research developed in the 1990s
- Allows community members to share their views on an issue through photos and associated captions or narratives
- Community members direct the focus of the research, identify the themes that emerge, and choose the photos that represent themes
- Storytelling through photography sparks meaningful discussions and deepens understanding
- Aims to influence decision-making by showing policymakers what community members think and value.

Photovoice Process Overview

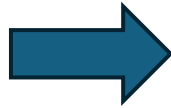


Our Photovoice Timeline



Today: PhotoVoice “Lite” Example

- Phase 1:
 - Introduce Assignment
- Phase 2:
 - Walking tour and picture-taking
- Phase 3:
 - View photographs and comment
- Phase 4:
 - Discussion and identifying themes



Training Agenda

- Walking Tour and picture-taking (1/2 hour)
- Sharing Photos
- Training
- PhotoVoice “Lite” Example Exercise
 - “Walkabout”
 - Discussion of themes over dinner
- Closing Instructions
 - Gift cards
 - Parking validation

PhotoVoice “Lite” Assignment (Julia)

- Walking tour of Constitution Plaza, learning about its history with our guide, Steve Thornton
- Assignment:
 - Take photos (using your phone) reflecting on these questions:
 - How does Constitution Plaza shape Hartford residents’ access to green space, natural amenities, and walkable neighborhoods?
 - Who benefits from Constitution Plaza? Who loses?
- Note:
 - Only photograph people with their permission.

Introducing our Guide, Steve Thornton

- Lifelong activist and retired union organizer
- Hartford resident since 1973
- Author of several books and many articles chronicling local people's history, especially in Hartford
- Maintains <http://www.shoeleatherhistoryproject.com/> documenting Hartford progressive organizing
- Leads walking tours revealing Hartford people's history

Walking Tour

- Follow Steve and students downstairs
- Return to this space by ~4:40p

Sharing Photos (Derin)

(1) CHOOSE
YOUR FAVORITE
PHOTO



(2) TEXT OR EMAIL
TO DERIN ATALAY



(3) (OPTIONAL)
INCLUDE A TITLE
OR BRIEF
CAPTION

TEXT:
347 500 9216

EMAIL:
DERIN.ATALAY
@TRINCOLL.EDU

Introducing PhotoVoice Assignment (Jenissa)

March 8-21:

*Take **5+ photos** of the **trash management process in your community** that you feel are significant. This could be anything related to trash disposal, collection, recycling, composting, or areas impacted by trash or trash processing facilities.*

As you take your photos and review them, reflect on the following questions:

- How do you and your household produce and manage trash?
- How do you think trash management affects the health, safety, or quality of life of the people in your community?
- How do you think trash management affects the health, safety, or quality of life of the people in communities beyond your own in Greater Hartford?
- Do you notice areas of Greater Hartford that seem to be more impacted by trash issues, and why do you think that is?
- If you could change one thing about the regional trash management system, what would it be?

Ethical & Safety Considerations (Jay)

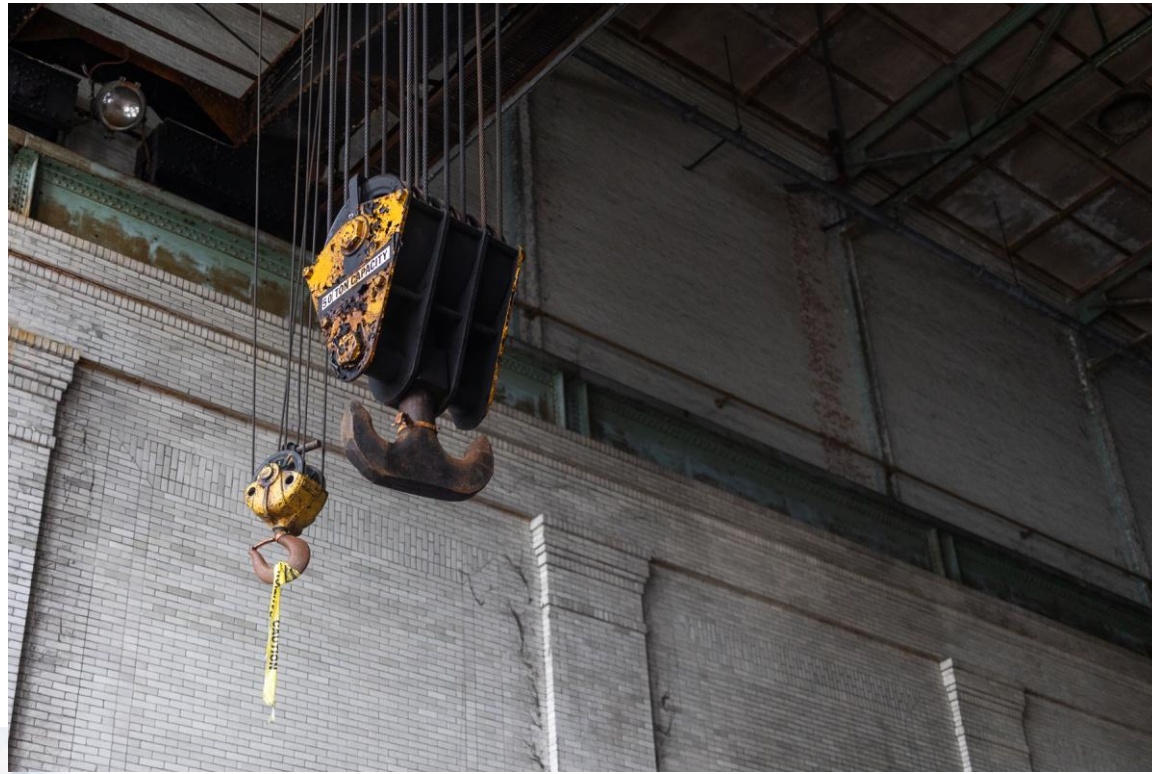
- Respect others' privacy
 - Ask **consent** to photograph people (use consent form handout)
 - Keep one copy of the form; give one copy to the person photographed
 - Don't photograph minors without parental consent
 - Ask **consent** to photograph private property or personal belongings
 - You don't need consent for photos of public figures, or people who cannot be specifically identified.
- Avoid physical and emotional harm
 - Will entering this space harm me or others?
 - Will taking this photo harm someone reputationally?
 - Does this photo accurately represent the overall situation?

Photography Recommendations (Sarah)

- Leading Lines



Rule of Thirds



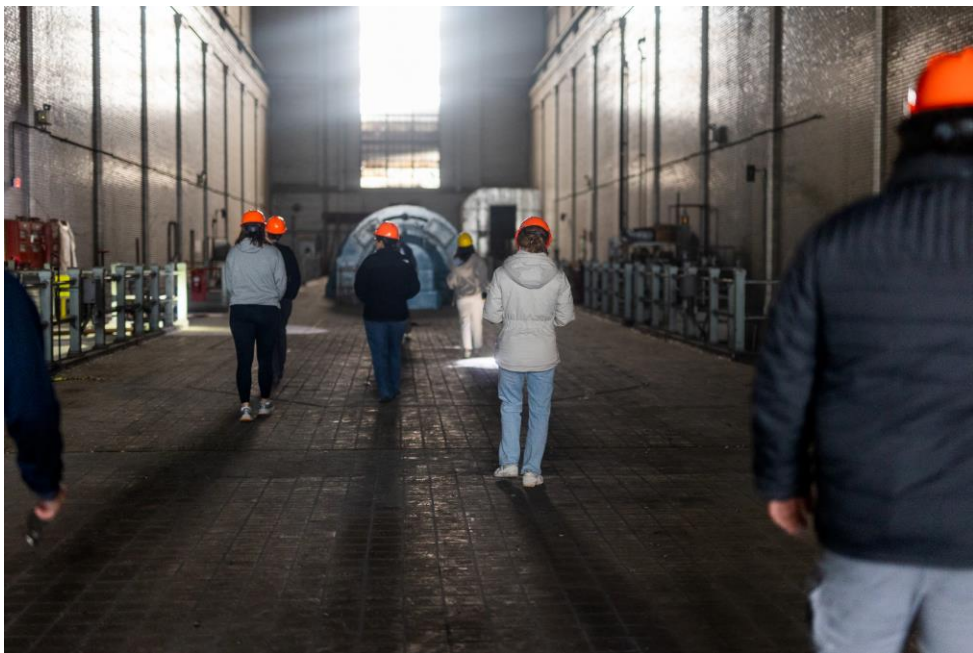
Negative Space



Perspective



Light and Shade



Sharing Photos (Scarlett)

- By **March 21**, you will upload the photos you take for this assignment.
- Photos can be uploaded using an online form.
 - See handout with QR code to access the form.
 - Use your smartphone to take photos, then scan the QR code from your phone to upload to the form.

Using the Form

- First, enter your participant number
 - See the top of the consent form in your folder
 - This allows us to properly credit your photos to your name or anonymous participant number

Your Name or Participant Number:

(If you have requested confidentiality your files will be saved under your participant number, but you can list either your name or number here)

Chose 3-5 “Featured” Photos to Upload

Upload your first featured photo

Drop files or click here to upload

Please enter a caption or title for the image you just added.

Where was it taken?

What do you see in this photograph? (describe the image)

How does this photograph represent your experience with trash management or environmental justice in Greater Hartford?

What emotions or thoughts does this image evoke for you about your community's environment?

Upload Any Additional Photos You Took

Sharing these additional photos:

- Helps us document the full project
- Supports Professor Amanda Guzman's associated research on curation

Now we will ask you to upload any additional photos you took in response to this prompt.

Upload one additional photo here.

Drop files or click here to upload

Upload one additional photo here.

Drop files or click here to upload

Upload one additional photo here.

Drop files or click here to upload

Next Steps (Abby)

- **March 8-20** – Take pictures responding to the assignment
 - Assignment handout
- **March 21** – Upload pictures via the form
 - Photo upload handout
- **March 26 – 4:30-7p** - Gather at the Stowe Center for Literary Activism to discuss photos and identify themes
- **May 1 – 4-6p** – (optional) Gather here at the Liberal Arts Action Lab, where students will present preliminary project findings.

PhotoVoice “Lite” Example

- Phase 1:
 - Introduce Assignment
- Phase 2:
 - Walking tour and picture-taking
- Phase 3:
 - View photographs and comment
- Phase 4:
 - Discussion and identifying themes



PhotoVoice “WalkAbout” (15 minutes)

- Grab a marker and 2 post it notes
- View photographs and any associated titles/captions
- Comment next to the photos:
 - **What does this photo make me think or feel about environmental justice in Greater Hartford?**
- Choose 2 especially “resonant” photos and flag them with your post it notes
- Finished? Grab dinner and return to your seat for discussion.



PhotoVoice Discussion

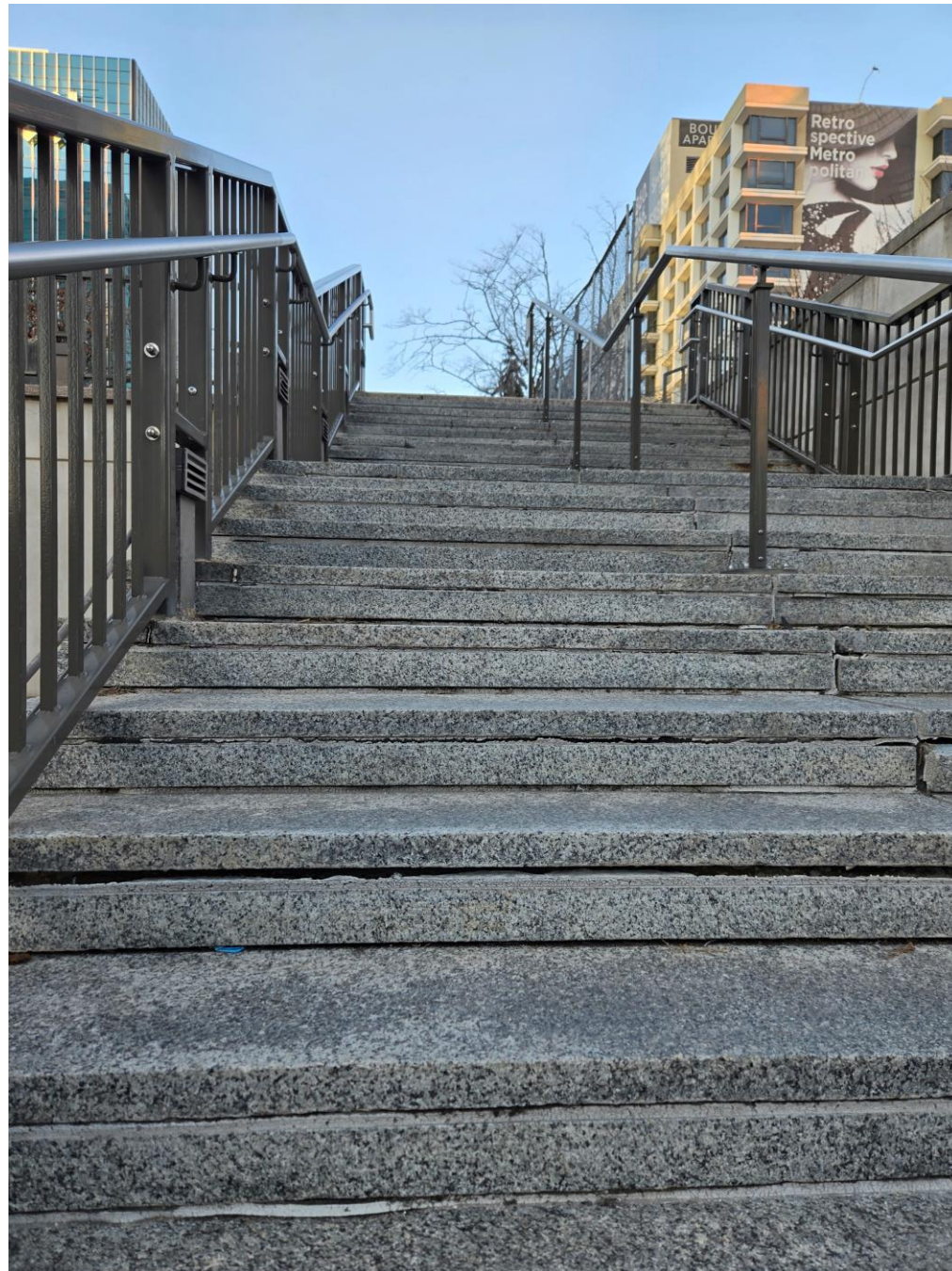
- Goal
 - Using photos to identify key themes community members are raising about an important issue
 - Selecting photos and associated narratives that best tell these stories
- Brainstorm – Looking across the photos, what **themes** stood out for you about environmental justice in Hartford?
 - Identify shared themes
- Which photos best represent these themes, and how?

Next Steps Reminder (Ariana)

- **March 8-20** – Take pictures responding to the assignment
 - Assignment handout
- **March 21** – Upload pictures via the form
 - Photo upload handout
 - See the contact information if you need help
- **March 26 – 4:30-7p** - Gather at the Stowe Center for Literary Activism to discuss photos and identify themes
- **May 1 – 4-6p** – (*optional*) Gather here at the Liberal Arts Action Lab, where students will present preliminary project findings.



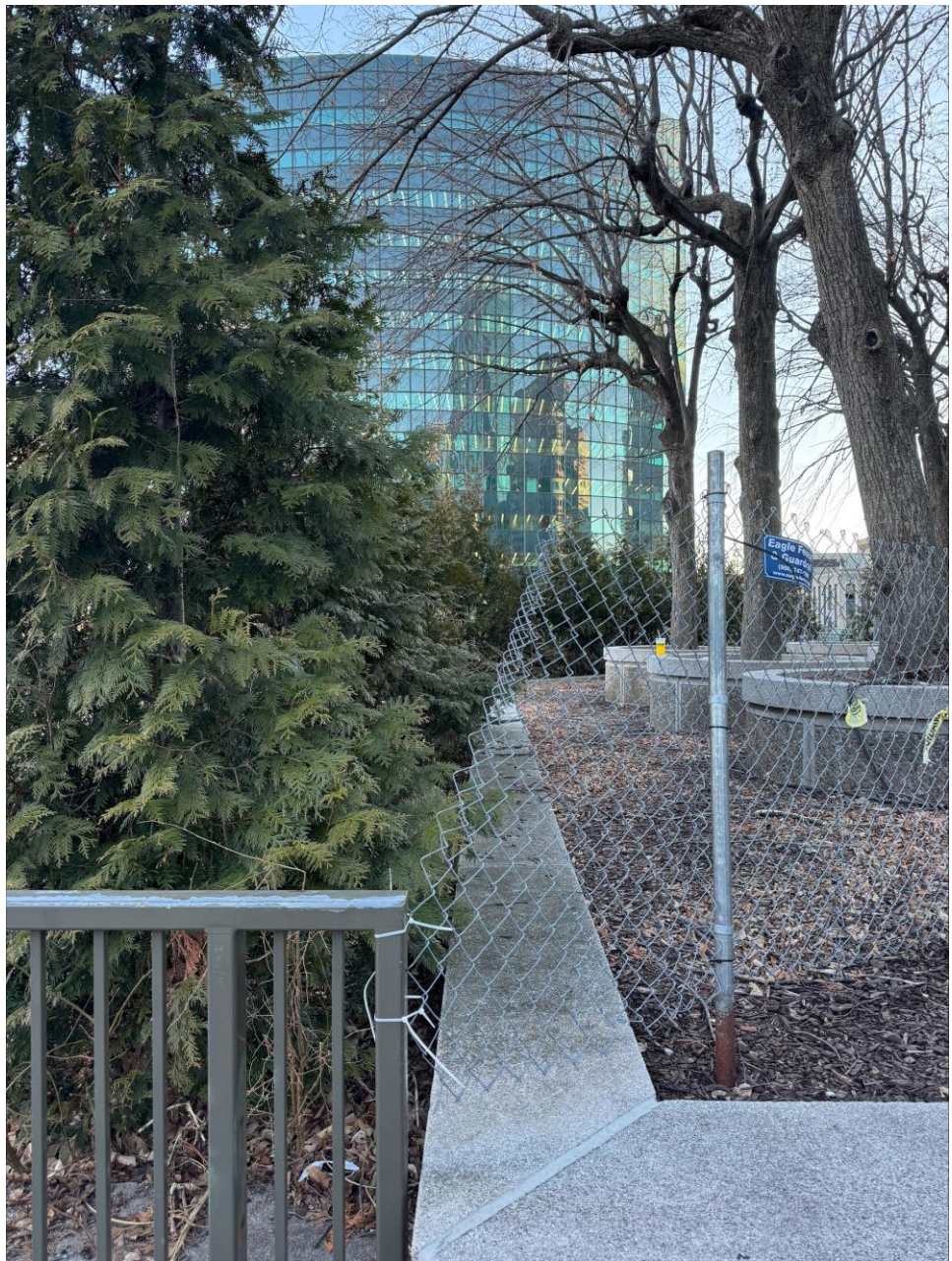




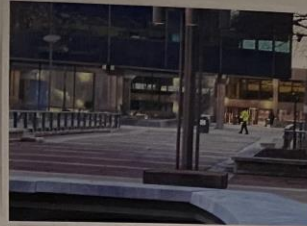












Space feels empty
empty
monotone

lifeless
no scooters, bikes, skateboards, etc.



walls all around

the only color on the whole plaza
↳ that's how it
for who?

Built
for exit



Wall
no access
buildings blocking sun

did you get
out? Being
stuck on
my bad I can't
leave



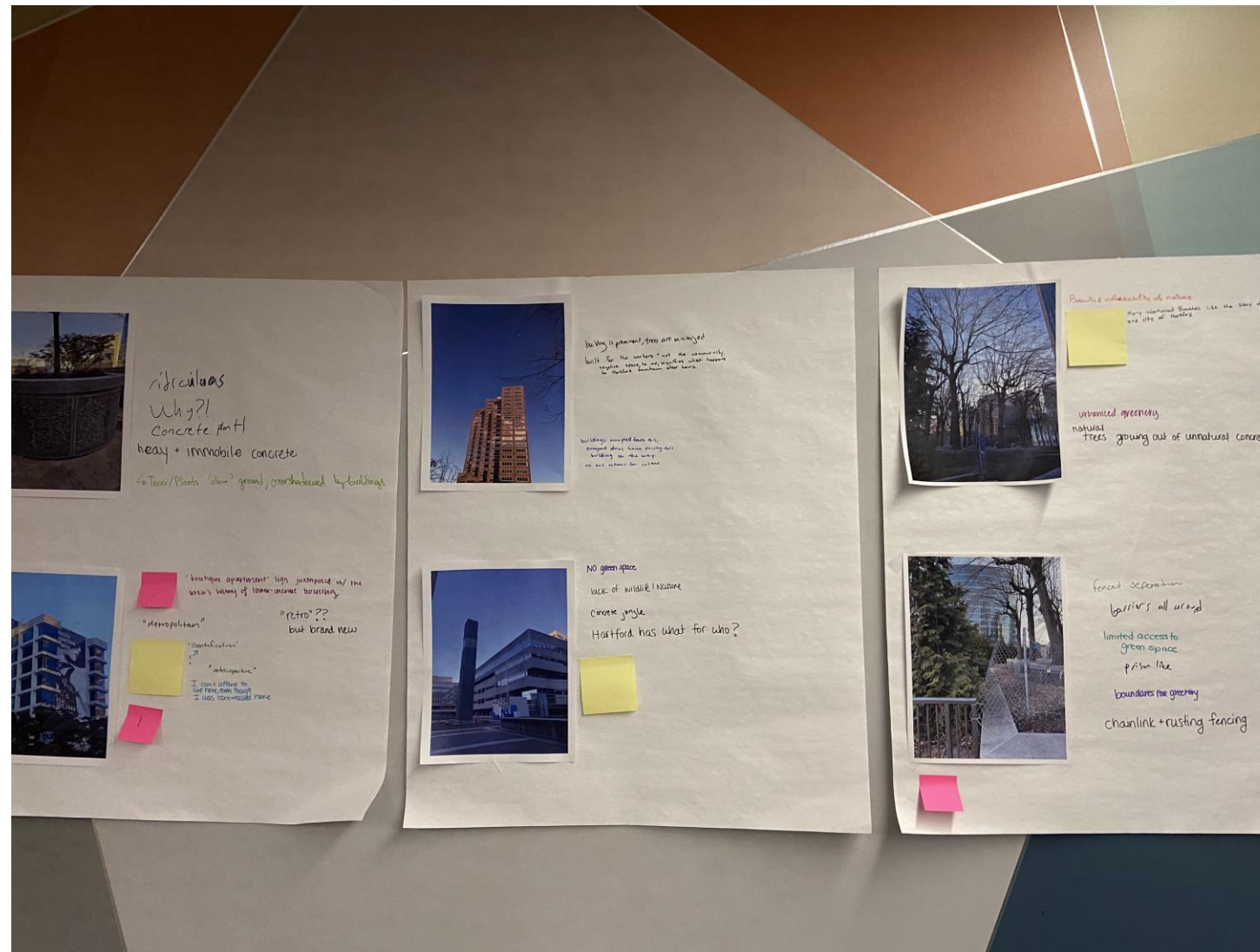
relevance of comment on accessibility - lack of
wheelchair accessible entrance means @ Constitution
Place

are quality

No accessibility

barrier (+)

in accessible



"Retrospective Metropolitan"

"Hartford Has it'?"

Artificiality^{x2}

Not accessible

no
ramps
stairs

Manufactured

Lively neighborhood to

Emptiness

"Bits" of nature

Grey

Housing Inequity
Lack of green space.

No signage

Sad

Purpose not
achieved

No scooters/bike

} transport

Remember
CONSISTENT FORMS!

10-7 participants

9 students

3 instructors

2 space

2. Enrichment

23?